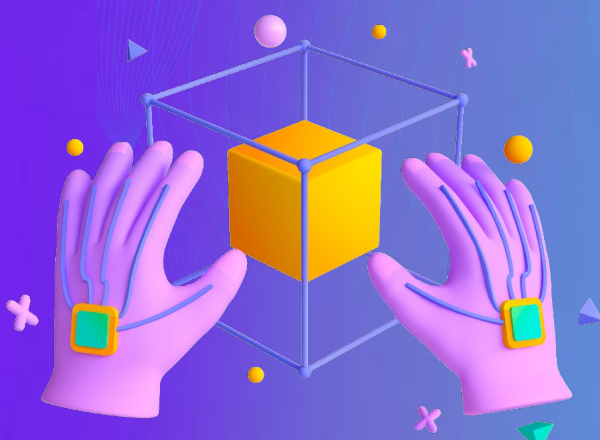


Challenging Bias in Big Data user for AI and Machine Learning

Welcome to Charlie project!

The CHARLIE project aims at challenging the bias in big data used for AI and machine learning by bringing a greater level of awareness regarding the negative impacts of the lack of a critical and ethical approach to TechEd.








Objectives

- **Increase the capacity of HE institutions**
 To provide its students online learning opportunities that meet society needs but also are tailored to students learning needs.
- **Increase Tech students social and ethical competencies**
 Allowing them to engage positively, critically and ethically with AI/ML technology
- **Equip teachers and professors**
 With digital and engaging approaches to effective teaching the topic (specially in online teaching)
- **Create synergies**
 Between Higher Education organisations and Adult Education and Youth at regional level in the field of AI ethics education
- **Potentiate the transferability of academia courses**
 AI biases to Adult Education and Vocational Education fields
- **Raise awareness about AI Biases at societal level**



Main Results

-  **b-Learning "Algorithmic Bias" course (EQF6)**
 For higher education students
-  **"Ethical AI microcredential" (EQF4)**
 For adults engaged in lifelong learning
-  **Online Serious Game (EQF2)**
 For young learners to start thinking critical about AI
-  **Toolkits for synchronous sessions**
 For teachers and trainers implementing the courses
-  **Implementation Guidelines**
 For administrative staff responsible for LMS



At IMPACTsci we are eager to adopt CHARLIE results and support our network to upskill in this field.



Andreia Morgado
 Director of IMPACTsci
 (CHARLIE Associated Partner)

Partners

